



CITY OF PLYMOUTH

Souvenir Programme

OPENING OF — *The*
CENTRAL PARK

by

The Right Worshipful The Mayor

(MR. J. CLIFFORD TOZER)

Wednesday, 29th July, 1931

PRICE OF PROGRAMME ONE PENNY



THE RIGHT WORSHIPFUL THE MAYOR
(MR. J. CLIFFORD TOZER)

HOE AND PARKS COMMITTEE

CHAIRMAN: . . . ALDERMAN W. A. MILLER

VICE-CHAIRMAN: Mr. COUNCILLOR W. G. KLIPP

ALDERMAN J. CHURCHWARD, J.P.

.. G. WESTLAKE

Mr. COUNCILLOR M. BRAUND

.. C. E. BRENDON

.. C. R. CLOAD

.. (Mrs.) C. H. DAYMOND

.. A. G. HUDDY

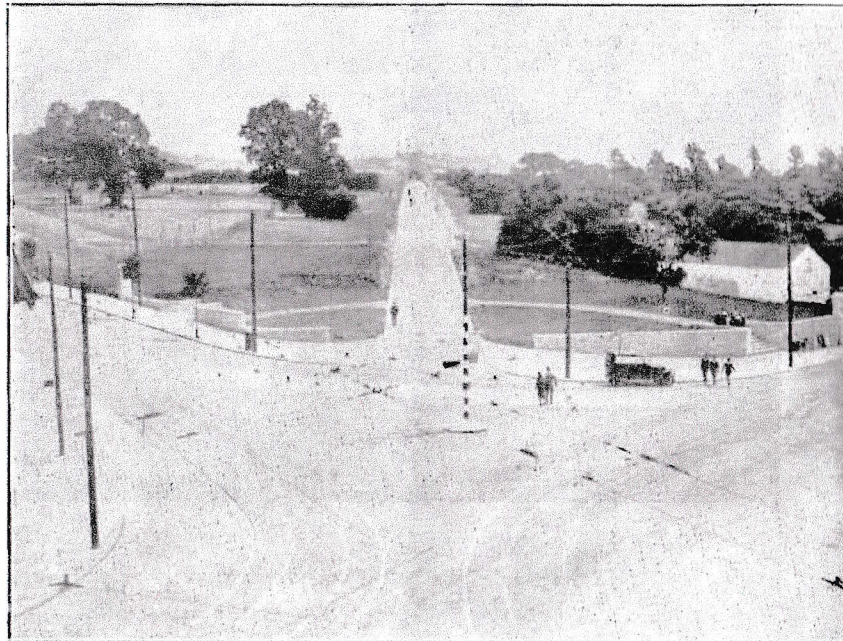
.. W. J. MATTHEWS

.. (Mrs.) H. ROBINS

.. C. H. TOWNSEND

R. J. FITTALL,
Town Clerk

J. WIBBERLEY, A.M.Inst. C.E., F.R.San.I.
City Engineer, Surveyor
and Architect



MILEHOUSE ENTRANCE

(PHOTO BY CYRIL H. GILL, LTD.)

PROGRAMME

CHILDREN'S PLAYGROUND

7-0 P.M.

The Chairman of the Hoe and Parks Committee (Alderman W. A. Miller) will ask the Mayor to declare the Children's Playground & Paddling Pools open to the Public.

Miss Betty Pattinson, a Pupil of the Hyde Park School, will present a Bouquet to the Mayoress (Mrs. J. Clifford Tozer).

PROCEED TO THE TENNIS COURTS

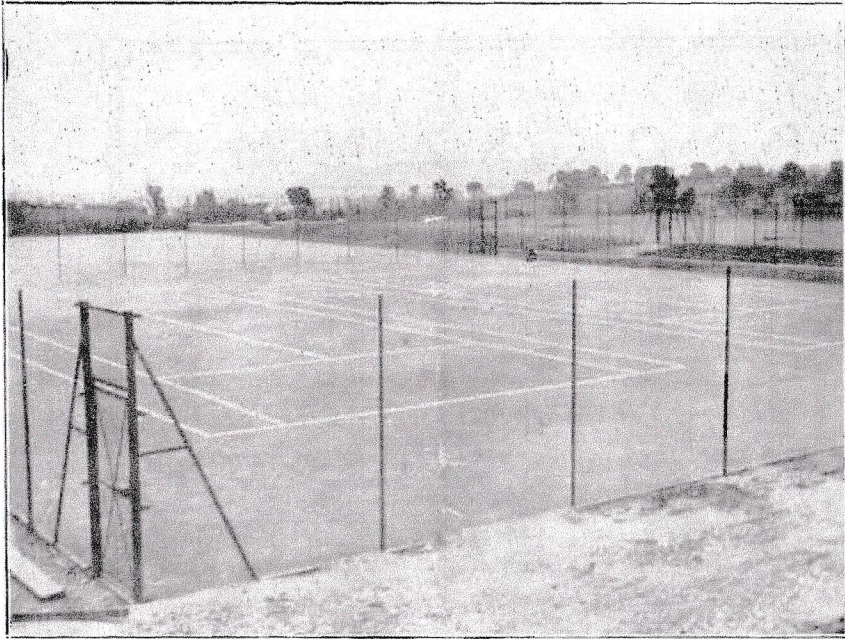
Alderman Miller will ask the Mayoress to open the Tennis Courts.

The Vice-Chairman of the Hoe and Parks Committee (Mr. Councillor W. G. Klipp) will propose a vote of thanks to the Mayor and Mayoress.

Councillor (Mrs.) Robins will second the vote of thanks.

Alderman Miller will then ask the Mayor and Mayoress to accept a Silver Inkstand as a memento of the occasion.

PROGRAMME CONTINUED
OVERLEAF



TENNIS COURTS

(PHOTO BY CYRIL H. GILL, LTD.)



CHILDREN'S PLAYGROUND

(PHOTO BY CYRIL H. GILL, LTD.)

PROGRAMME

The Mayor will then proceed to open the Putting Greens.

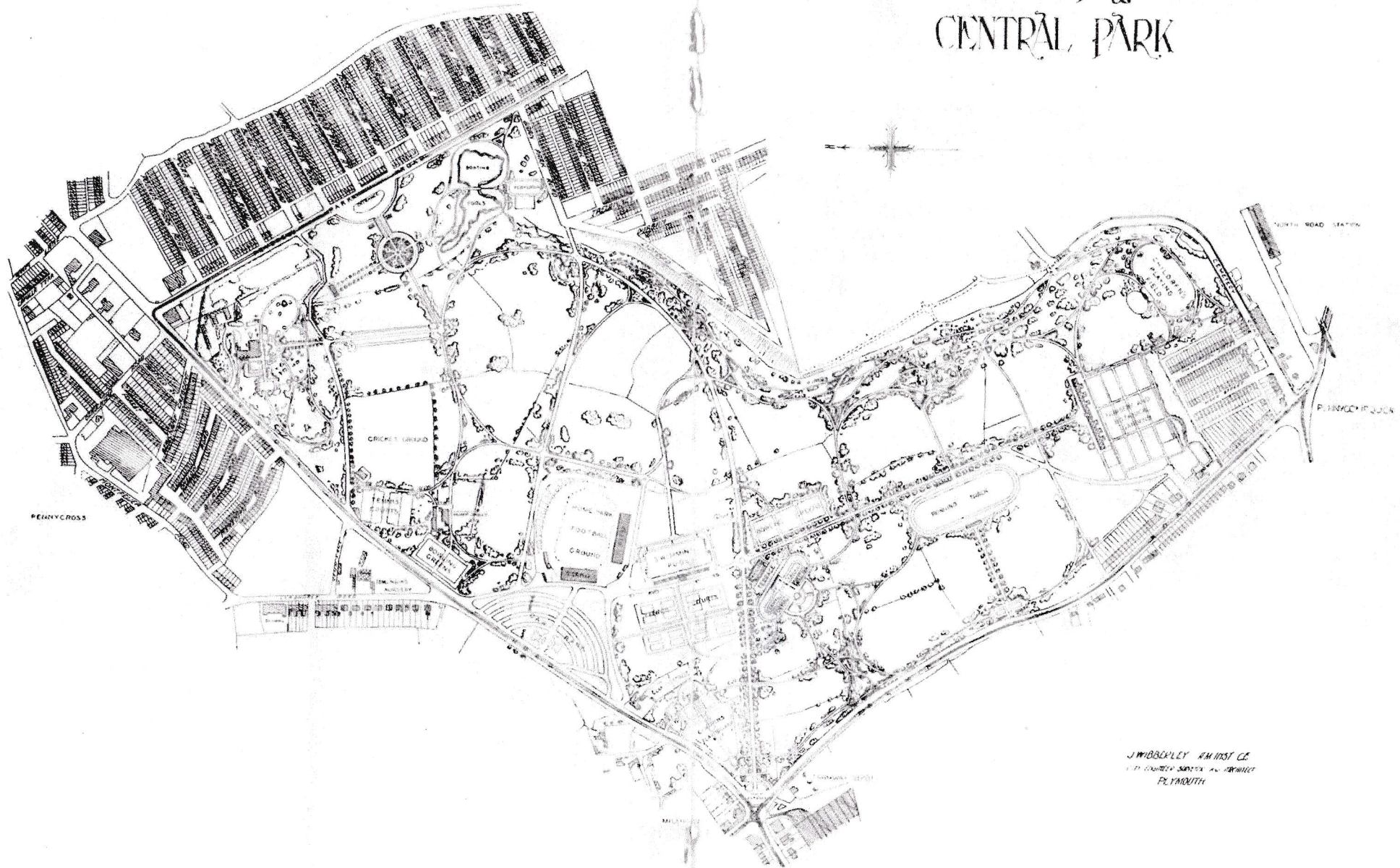
After the Playground has been declared open a demonstration of games by pupils attending the City of Plymouth Schools will take place.

1. Cricket . Net Ball . Rounders
2. Use of apparatus provided at the Park.
3. Sailing and Paddling.
4. Camping.
5. Games and Gymnastics.

After the Tennis Courts have been declared open an exhibition of Tennis will be given by Members of the Mannamead Lawn Tennis Club and the Plymouth and District Lawn Tennis League.

During the evening The City of Plymouth Orchestra and Military Band & The Plymouth City Mission Band will render selections.

CITY OF PLYMOUTH CENTRAL PARK



J. WOODBERRY ARCHT. CL.
111, QUEEN'S SQUARE, LONDON
PLYMOUTH

The Development of Central Park

THE PARK has an area of 234 acres and is easily accessible from any part of the City. Tram and 'bus routes lie along two thirds of the boundary of the Park.

The land was acquired under the provisions of the Plymouth Corporation Act, 1923, at a cost of £110,988, and it is anticipated that the complete lay-out will probably cost £130,000.

Constructional work on the Park was commenced on the 6th February, 1923, when Alderman J. Churchward, who was then Mayor of the City, cut the first sod.

The work of laying out the Park is being extended over a period of years and is being undertaken in sections. The commencement of the work was expedited to provide relief for unemployment in the City.

Two sections of the lay-out have been undertaken, comprising :

A mile and a half of main avenues and pathways.

The preparation and drainage of 144 acres of grassland for use as playing fields.

An equipped playground for children.

Eight match-size green hard tennis courts.

Two bowling greens.

A modern car park to accommodate over 1,000 cars.

Three and a half acres of a new central nursery.

The Main Avenues form promenades of easy gradients, and are so planned as to give access to all parts of the Park from new entrances which have been provided at Milehouse, Tavistock Road at its junction with Lyndhurst Road, Barn Park Road giving access from Peverell Park Road, Ford Park Road at its junction with Cemetery Road, and Alma Road near Pennycomequick.

The Main Entrance is at Milehouse ; from this spacious entrance a straight avenue leads to the social centre of the Park, from which radiate other avenues, giving access to all parts of the Park and connecting with the entrances previously referred to.

The Principal Avenues are provided with modern lighting arrangements which should give very effective illumination.

Playing Fields. Fields are appointed for cricket, football, hockey and other sports. Many fields of steeper gradients are reserved for picnics and for romping. Hundreds of picnic parties can be accommodated and many miles of enjoyable rambling can be indulged in.

Equipped Playground for Children. This is situated near the main entrance at Milehouse. Here small lawns and pathways are provided for the young children ; also two large paddling pools. These pools are shallow and contain fresh water. Consideration has been given for the safety of the paddlers, and to obviate slipping, as much as possible, the bottoms of the pools have been finished sufficiently rough, and the edges of the pools have been paved with a non-slip paving. The surrounding paths slope away from the pools to prevent pollution of the water in the pools by drainage from the surrounding land. Easy access to the pools has been provided along one side of each pool by a series of very shallow terraces. On the eastern side of the paddling pools is the equipped playground which

contains some of the most modern apparatus for the amusement and physical exercise of children. The apparatus has been grouped to have those items for young children at one end and those for older children at the other end.

The playground is divided by a spacious promenade, with grass verges, from which the whole of the apparatus can be seen.

The apparatus includes joy-wheels, merry-go-rounds, ocean waves, giant strides, see-saws, large and small swings, rowing see-saws, plane swings, plank swings, parallel bars, horizontal bars and horizontal ladders.

Tennis Courts. Eight hard tennis courts of modern construction have been provided. These are green in colour and may be played upon in almost any weather. Every consideration has been given to size, aspect and other conditions required by the Lawn Tennis Association. These courts should form a great attraction to local tennis enthusiasts, and should attract to Plymouth some of the premier competitions. The courts are arranged in pairs and grouped in series of four, divided by promenades and wide borders of flower beds.

Bowling Greens. Two greens are being provided of special construction. The turf, which is specially prepared for surfacing bowling greens is a sea-washed turf obtained from Lancashire. The constructional details are as required by the English and Scottish Bowling Associations and the laying of the turf is being done by qualified turf-layers. The greens are arranged in terraces and surrounded by promenades.

Car Park. The Car Park has been laid out on modern lines and accommodates 1,000 cars. Its approaches are from Tavistock Road and it is situated near the sports area of the Park.

Putting Greens are provided. Two courses have been laid out in fields abutting Tavistock Road opposite its junction with Lyndhurst Road.

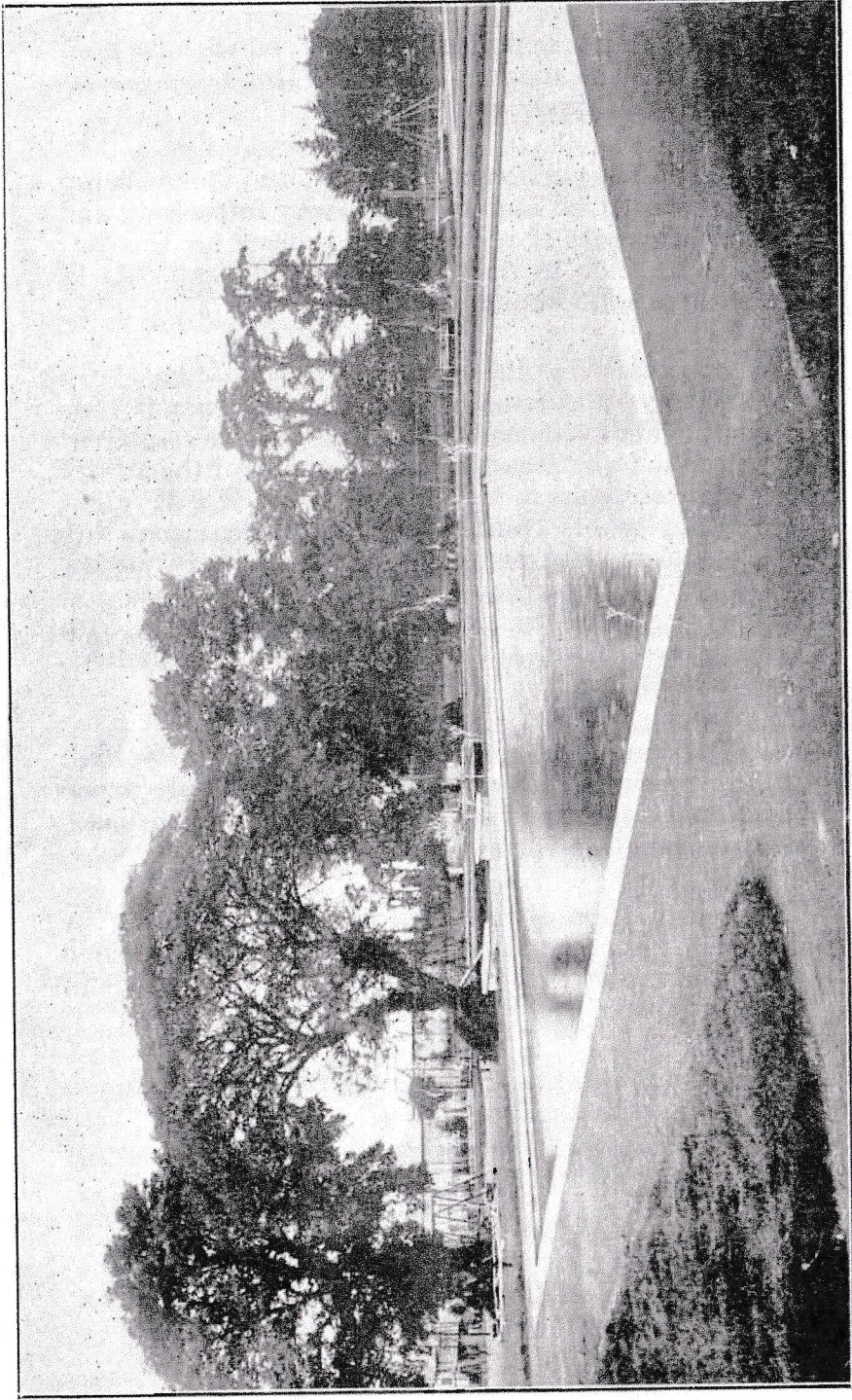
Lay-out. The portion of the layout that is now being completed will be found to be a very interesting and entertaining part of the ultimate scheme for this important addition to the City's many admirable Parks and Recreation Grounds.

The proposals for the complete layout of the Park include two additional equipped playgrounds, one situated at Pennycomequick end and the other adjacent to Peverell Park Road; boating pools on the site of the old reservoirs near Peverell Park Road; eight additional tennis courts, three additional bowling greens; a modern swimming pool, a sports arena, winter gardens, completion of the central nursery and botanical gardens, an aviary, a central pavilion with cafe, terraces, band stands, formal gardens, shelters, promenades, etc.

The Park includes the Plymouth Argyle Football Club's ground with accommodation for about 50,000 spectators and the Plymouth Cricket Club's ground, which are both owned by the City Council.

The construction of the Park is being carried out by the City Engineer in accordance with plans prepared in collaboration with Messrs. T. H. Mawson and Sons of Westminster.

When completed this Park should rank with the finest Public Parks in the Kingdom.



CHILDREN'S PADDLING POOLS

(PHOTO BY CYRIL H. GILL, LTD.)